

**rooms open for those
who come along**



not empty buildings, but places with visible and invisible traces of history, places which have grown and decayed over centuries, places which were shaped by those people who lived there long ago as well as those who only left yesterday – places which will be shaped by all of those who will live there or who will come as guests.

rooms which want to be filled with dreams and ideas, with meetings and exchanges, by people of different backgrounds, different cultures, different generations and different ideas and visions.

2017

Workcamps

Building Weeks

Heritage Volunteers

Mid Term Volunteering



Open Houses & European Heritage Volunteers Project Places 2017



Open Houses – rooms open for those who come along.

Open Houses – not empty buildings, but places with visible and invisible traces of history, places which have grown and decayed over the centuries, places which were shaped by those people who lived there long ago as well those who left only yesterday – places which will be shaped by those who live there or who come as a guest.

Open Houses – rooms which want to be filled with dreams and ideas, with meetings and exchange, by people of different backgrounds, different cultures, different generations and different ideas and visions.



The history of Open Houses Network dates back to the mid-1980s, when a group of young people started to restore village churches in East Germany in voluntary work to protect them from decay. The engagement for these buildings united people who enjoyed the freedom these activities provided and who filled these rooms with life again in ways which by far exceed the craftsmen's work done – through exhibitions, concerts, making music together or just sitting by the camp fire.

Meanwhile, rooms free of political and ideological pressure are no longer urgently required; however, places have become rare where people can meet without commercial pressure, free of bureaucracy and institutionalism, free of nepotism and the exclusion which it produces.

What should be easy – to go somewhere in order to meet people and to work together – has become difficult. The tightrope walk between, on the one hand, public activities in a monetary and functional sense, and the retreat into private life on the other, is very difficult, and it requires a lot of power and permanent efforts to tackle red tape and financial restrictions.

Free spaces are less and less understood as common property, and are permanently being cut back. The idea of public property seems to have gone out of fashion, and places of common responsible work have become rare.

Open Houses Network tries to create and protect such spaces. In this process, we do not want to be the do-ers, but be people who have a vision, who want to initiate something, but who also are aware of depending on the co-operation of others. We understand our projects and events as offers – as offers to create space for commitment, for changes, for meetings.

The different types of Open Houses' projects

Workcamps

For the last 25 years Open Houses has organised international Workcamps at **historical monuments and buildings**. The projects are mostly situated in the **countryside** and the places are **surrounded by beautiful nature**. The Workcamps offer the possibility to **live together with people from different countries in basic conditions**. The volunteers will take care of the surrounding area and will carry out small renovation works.

Often, the mix of different cultures and the willingness to do volunteer work inspires the inhabitants of the region to a new way of working and results to a new view on their own historical buildings especially in rural regions where the old buildings had rarely received any public attention.

The volunteers of our Workcamps work **six hours per day five days a week**. The afternoons and evenings can be used for nearby cultural attractions, games, group activities, campfires and other similar things. On the weekends the volunteers have the possibility to visit nearby places.

Building Weeks

In addition to the Workcamps Open Houses offers something quite different: **Building Weeks**. These special projects are tightly linked with the aims and idea of Open Houses: **to restore and protect public places with common responsible work**.

It is important for Open Houses to allow the buildings to preserve their particular spirit, history and atmosphere. Within the framework of the Building Weeks both, **skilled manual workers** and those with no manual training, but a certain interest in the topic, are working together to **restore historical monuments** and carrying out other construction works. Participants of the Building Weeks have a bigger possibility of gaining **real experience in handcraft, restoration** and other manual tasks and to **expand their knowledge**.

Another aim of the Building Weeks is that the volunteers should **share their skills and experiences**. To make the work in the Building Weeks as productive as possible, it would be welcome if the volunteers would already have **some technical skills** and it also would be an advantage if they have **previous experience in working on a construction site**.

Each Building Weeks project lasts for **at least two weeks** and the groups are small. It is also possible to take part for a shorter time, like **just for one week**. We offer this opportunity for those who are tied up in working life and do not have so much free time. In Building Weeks the emphasis lays on the **manual work** and the daily working time is **seven hours**. On the weekends the volunteers have the possibility to visit nearby places.

Heritage Volunteers Projects

In accordance to the above described focus on heritage **European Heritage Volunteers**, a branch of Open Houses, organises **Heritage Volunteers Projects**.

Heritage Volunteers Projects combine practical work for the **preservation or restoration of a cultural or natural heritage** site with an **extensive educational part** that gives the theoretical background for the hands-on works and provides deeper heritage linked knowledge. Heritage Volunteers Projects focus on traditional handcraft techniques, on the revitalisation of abandoned monuments, on the restoration of historical parks, on the maintenance of cultural landscapes or on other related topics.

Some of the Heritage Volunteers Projects are organised in the framework of the **World Heritage Volunteers initiative**. The initiative was launched as a part of the UNESCO World Heritage Education Programme in order to mobilise and involve young people and youth organisations in **heritage preservation and promotion**. Since 2008 more than 200 projects at more than 100 World Heritage Sites in 46 different countries worldwide have been organised, in which more than 3,500 volunteers from over 70 countries have taken part. The **European projects** of World Heritage Volunteers are **coordinated by European Heritage Volunteers**.

Furthermore, European Heritage Volunteers initiates, develops, supports and mentors **European Heritage Volunteers Partner Projects** which are organised by heritage linked non-profit organisations in other European countries.

Read more about Heritage Volunteering Projects on www.heritagevolunteers.eu.

Mid Term Volunteering

Open Houses offers the possibility to participate for a longer time in volunteer projects, too. This kind of volunteering gives the opportunity to get to know the hosting organisation, its work and aims in a deeper way. In a time frame **between four weeks and four months** the volunteers will get the chance to learn a lot about Germany, its culture, language and people.

From June till October Open Houses is looking for around fifteen Mid Term Volunteers. There are three different kinds of MTV projects: **Social Camp Leading, Technical Camp Leading** and **Guest Guiding**.

For the time of the voluntary service accommodation, food and insurance are covered by Open Houses, the volunteers get a small pocket money. At the beginning of their service the Mid Term Volunteers – except those in the Guest Guiding Projects - as a kind of **introduction for about two weeks** will take part in a Workcamp as regular volunteers in order to get familiar with Open Houses and the atmosphere of volunteer work.

Terms of Organisation

CHARGES

Open Houses asks the participants for a contribution of **35 € per week** what covers a part of the costs of food and accommodation.

AGE

In general participants have to be **at least 18 years old**. For MTV projects the age minimum is **20 years**.

PARTICIPATION TERM

Participants of **Workcamps** and **Heritage Volunteers Projects** have to take part for the **whole time of the project**.

At **Building Weeks** it is also possible to take part just for **one week of the project**. This possibility is especially an offer for people who are tied up in their job and often do not have enough time to take part at the whole project.

LANGUAGE

In general, the language spoken in the camps is **English**.

But in all camps there is also the possibility to practice **German** with other volunteers, camp leaders and the local people.

INSURANCE

In cases of **accident, illness and liability** all participants from foreign countries are insured by Open Houses. Nevertheless **individual travel insurance** is recommended.

Participants from the European Union should bring their European Health Insurance Card.

FINANCES

All costs linked to the project are covered, including food, accommodation, insurance and transportation during the stay at the project.

Travel costs to and from the camp place are not covered. Participants should organise their journey to and from the project place by themselves and on their own expenses. Furthermore participants should bring their **own pocket money**.

ACCOMMODATION

In most of Open Houses' camps the volunteers will live at the same places they also work on, what means that they **live more or less on a building site**. The accommodation is very simple; there are shared rooms with simple beds or mattresses at most of the places. Shower, toilet and kitchen are at the place, but sometimes not in the same building.

The equipment is simple but fair. After work, when everybody wants to take a shower, it may happen that there is a limit of hot water.

FOOD

The meals will be prepared together as they are part of the community life, what means that **every participant will be responsible for the meal at least once during its stay**.

So it would be very nice if the participants could bring typical recipes from home in order to introduce each other to the preparation of food from all over the world.

LEISURE TIME

The camp places are mostly situated in **small villages** in rural areas, so the participants should not expect busy places and normal city activities for the leisure time during the working days. Small trips in walking distance are possible in the afternoon.

On the weekends it is possible to organise an **excursion to nearby cities** or to have other leisure activities.

ARRIVAL DAY AND TIME

Open Houses' camps start mostly on Sundays or Mondays, the Heritage Volunteers Projects on Saturday or Sunday.

The **first day is always the arrival day** and we ask the participants to arrive between 3 p.m. and 7 p.m. So all the volunteers can already get to know each other and can have their **first common dinner** before the work will start at the following morning.

TRAIN AND BUS TICKETS

We recommend to use **only local train transportation** (RE or RB). Intercity trains and similar fast trains (IC or ICE) are very expensive. In Germany there are **regional tickets** and **weekend tickets**, which are not too expensive and can be used **by up to 5 people** in the specific region or all over Germany with local transportation.

Additionally, since 2013 there had been established a **long distance bus system** in Germany. The tickets for the busses can be bought in advance by internet and are often cheaper than those for the trains.

Participants will receive further information for the arrival to the camp in the infosheet.

HOW TO GET TO THE CAMP PLACE

Most of Open Houses' places are **connected to local transportation** like trains and busses. On some places the local transport is not operating on weekends, but in this case the camps will start and end on weekdays. **Short distances, up to two kilometres from the station to the camp, the volunteers should walk.** At other camp places, where the connection to local transportation is very bad and the distance is more than five kilometres, we offer the possibility to pick up the volunteers from the station.

We will inform about the local transport of the particular camp sites and about the walking directions in our infosheets in time.

LEAVING THE CAMP

As during the camp the participants will make new friends and may make plans for travelling after the camp, **we recommend not to buy train tickets** for the return trip to the airport **in advance**. Furthermore, volunteers should plan if possible **some more days for travelling** in Germany after the camp.

WHAT TO BRING

Usually average temperatures in Germany during the summer time are about 20° to 30°C, during the night it will get colder. It is possible that there may be three weeks of non-stop sunshine, but every day rain is not impossible either. In September and October it's about 8° to 18°C.

- Passport
- Insurance Certificates (EU-members should bring their European Health Insurance Card; those which have an individual travel insurance should bring the certificate)
- sleeping bag
- stable work boots, really appropriate for practical work
- appropriate clothes, waterproof coat
- mosquito protection lotion
- dictionary
- typical recipes, sweets, music, instruments and games from the participants' home country
- ideas, games and equipment for group activities and workshops (juggling equipment, poi, handicrafts, etc.)

PLEASE NOTE

Open Houses does not provide **internet access or phone** at the sites. So it will be not possible for the participants to check emails or to make phone calls from the project place. The next public phones are at most of the places far away and there are **no internet cafes** nearby.

In case that participants will need access to internet or phone they should prepare themselves in advance.

Furthermore **washing machines are not** available at the camp places.

The historic park of the old “Waldhaus” Grandhotel

Historischer Park Grandhotel “Waldlust“



ACCOMMODATION:

shared rooms with beds, warm showers, toilets

LOCATION:

Next towns: **Offenburg** (51 km)

Tübingen (59 km)

Region: **Baden-Wuerttemberg**

TERMINAL:

Next railway station: **Freudenstadt**

Next airport: **Stuttgart** (STR, 81 km)

AGE:

at least 18

WHAT TO BRING:

stable work boots, sleeping bag,

appropriate and waterproof clothes

**Motivation letter related to the project
and CV + photo required**

The “Waldlust” Hotel in **Freudenstadt**, founded in 1899, was a first choice resort of a noble society of spa guests. It stands as a historic architecture building, as a cultural heritage treasure, as a long time social meeting place in a high rank – a unique symbol of a former golden period of town development.

During the 1st third of the 20th century the hotel took a breathtaking career, carried by the arrival of many world famous guests – kings, queens, princes, poets and artists. “Waldlust”, the leading hotel of Freudenstadt, came to success by the entrepreneurial genius of a widespread hotel dynasty, the Luz family, who owned and managed several well known houses in Freudenstadt, Baden-Baden and Austria.

Today the old palace with its impressive size and scenery and its glorious “personal” history offers us a review back to a golden era, almost unimaginable for such a small town deeply embedded in the Black Forest woods.

The Freudenstadt Association for Heritage is highly ambitious to preserve the splendid architecture as a cultural heritage site of a great age. Therefore it undertakes rooftop repairing and other constructive measures, carries out conservation works as well as preventive measures against the loss of art. The association also informs about the great history of the heritage site by guided tours and by public relation efforts of all kinds.

The “Waldlust” Hotel is surrounded by a wide park area, which formerly served as an old style wellness and leisure time retreat for the noble high society clientele: with broad promenades, nicely built in the steep hillside, with stone walls and stair cases as well as intimate sitting opportunities, which offers marvellous outlooks.

This once very characteristic Grandhotel leisure ground had been fallen to oblivion in many years. Forms and structures had gone lost, due to the absence of any gardening and cultivation – until the “Denkmalverein” started to restore paths and interesting places of this traditional ground.

The project will consist of two parts – a practical **working part** and a **study part**.

The practical working part, which will take place at different parts of the site, will last six hours per day. In the evenings and during the weekend there will be time for the educational and cultural activities.



The European Heritage Volunteers Project aims at **restoring and cultivating further parts of the historic hotel park**. Thereby the old concept of “Parkwald” (park forest) should be regained and brought into presence. This concept, being founded during the 1st decade of 20th century solely in Freudenstadt, means a specific and delicate kind of cure and wellness infrastructure.

The “park forest” idea had come out as a unique pioneer act made by the Freudenstadt town builders of those years. In 2025, when Freudenstadt will host a half year “green exhibition” for the state of Baden-Wuerttemberg, the hotel park should contribute a singular and outstanding historic scenery.

The works, which will be carried out during the project, include a conceptual and intelligent sweep of the green wilderness, which has captured the originally garden site. This means the **clearing of small or middle aged trees and plants** that are not typically for the park as well as the excavation of garden structures with century old origin currently covered by leaves.

Finally, a **handcrafted historic water suspension system** in the hill slope, dating back to 1892, which combines as well technical as artistic construction value, will be restored.

Those works and measures will surely help the city of Freudenstadt, its citizens and guests, to realize the enormous treasure of air-bath heritage and livelihood during the golden age, when this formerly rural town deep down in the woods became a world famous spa resort.

The garden project can also set an impulse for a highly needed renewal, a new start for the whole old cure district of Freudenstadt.

Parks and Gardens of Classical**Weimar**

Parks und Gärten des Klassischen Weimar

**ACCOMMODATION:**

shared 6- or 8- bed-room in a hostel in the city

LOCATION:Next towns: **Erfurt** (20 km), **Jena** (20 km)Region: **Thuringia****TERMINAL:**Next railway station: **Weimar**Next airports: **Halle/Leipzig** (LEJ, 120 km)**Berlin** (TXL, SXF, 275 km)**AGE:**

at least 18

WHAT TO BRING:

stable work boots,

appropriate and waterproof clothes

Basics of German are very helpful,**Motivation letter related to the project****and CV + photo required**

Weimar is a beautiful small city, located in the middle of Germany in the state of Thuringia. In the late 18th and early 19th centuries this small town saw a remarkable cultural flowering. Enlightened ducal patronage attracted many leading German writers, composers and artists to the town, including Johann Wolfgang von Goethe, Friedrich Schiller and Franz Liszt, thus making Weimar the cultural centre of Europe at that time. This development is reflected in the high quality of many of the buildings and parks in the surrounding area.

“Classical Weimar” was added to the list of UNESCO World Heritage Sites in 1998, the 20th site in Germany to be recognised as World Heritage. “Classical Weimar” comprises twelve individual buildings and ensembles, all of which portray tangible and intangible elements of Classical Weimar’s cultural heritage. Weimar’s City Castle, the Duchess Anna Amalia Library, Goethe’s and Schiller’s residences, the Town Church, the Ducal Vault with the Historic Cemetery and many others are included on the World Heritage List.

Weimar’s historical parks and gardens connect the historical buildings and their surrounding grounds and are a key feature in the “Classical Weimar” collection: the Park on the Ilm with the Roman House and Goethe’s Garden House, Belvedere Park with its Castle and Orangery, Tiefurt Park and Castle and Ettersburg Park and Castle.

During the 20th century Weimar became the birthplace of the Modern Movement in architecture and aesthetics. “Bauhaus” was developed by merging the Grand Ducal School of Arts and Crafts and the Weimar Academy of Fine Arts. “Bauhaus” had, and still has, a profound influence upon developments in art, architecture, design and typography. The “Bauhaus and its Sites in Weimar and Dessau” are listed as UNESCO World Heritage, too.

For all this historical marks Weimar became in 1999 European Capital of Culture.

The project will be very intensive and will consist of two parts – a practical working part and a study part.

The practical working part will last six hours per day and take place in the first half of the days. In the afternoons and evenings study and educational activities will be organised.



Continuing the World Heritage Volunteers projects having taken place since 2012 at the World Heritage site Classical Weimar the project will support the revitalisation of abandoned parts of *Belvedere Park*. The volunteers will – based on historical plans and in intensive cooperation with the site management – **uncover and restore historical paths** which had been disappeared some decades ago.

A part of the group will – alternating from day to day – carry out **different gardening and preservation works** in other parks belonging to the World Heritage site in mixed groups of international volunteers and local workers, in the same time enabling the participants to get to know the diversity of the World Heritage site Classical Weimar. In these parks are many sloping areas where it is only possible to deal with manual work. The volunteers will support the works as **cutting grass, cleaning paths**, etc.

The **study part** will give the theoretical background for the project. Depending on the interests of the volunteers there will be **lections and guided tours** about Classical Weimar mostly organised by *Classic Foundation Weimar*, the main project partner. The study part will also **bring** the project and the World Heritage Volunteers programme in general **into a wider public**. It will include meetings with the press and presentations held by the participants about World Heritage sites of their home countries.

In their **spare time** the volunteers will have the possibility to visit museums and exhibitions – for the duration of the project they will have **free entrance to all museums** managed by *Classic Foundation Weimar*.

The best way to be mobile in a town like Weimar with a lot of gardens and parks is to discover it by bike. Therefore the participants will have during their stay **bicycles** for their disposal, which they also have to use to reach the different working places.

Depending on the interests of the volunteers an **excursion** to another historical complex will be organised on the weekend – to *Gotha Residence Castle* with its park, which is one of the biggest parks in Germany and includes the eldest English garden outside Great Britain.

Historic mining region Erzgebirge

Historische Bergbauregion Erzgebirge

**ACCOMMODATION:**

shared rooms with beds, warm showers, toilets

LOCATION:Next towns: **Freiberg**, **Dresden** (38 km)Region: **Saxony****TERMINAL:**Next railway station: **Freiberg**Next airports: **Dresden** (DRS, 47 km)**Leipzig** (LEJ, 111 km)**AGE:**

at least 18

WHAT TO BRING:

stable work boots,

appropriate and waterproof clothes

**Motivation letter related to the project
and CV + photo required**

In 1168, the first discovery of silver ore in Freiberg had a profound and lasting effect on the development of the region. Located in a Central European mountain range on the border of Germany and Czech Republic, the region has played a major role at certain times in the output of tin, silver, cobalt, caolin and uranium in a global context. The rich ore deposits gave the region its name *Erzgebirge* (Ore Mountains). Mining was for centuries the key industry forming an exceptional transboundary mining cultural landscape with all its typical surface and underground installations, mining towns and natural features as well as the associated intangible values.

Located in the Freiberg mining district, the *Reiche Zeche* (Rich Mine) mine is one of the oldest silver mines in this area, first documented in 1384. In the following centuries, several other shafts developed in the neighbourhood. At the end of the 18th century, all shafts were combined under the name *Himmelfahrt Fundgrube* (Ascension Mine) which developed in the 19th century into the biggest European silver mine with over 2,800 miners and an output of 448 tons of silver between 1840 and 1896. With the decline of the silver price since 1873 the number of miners was step by step reduced and in 1913 the mine was closed. Today, the *Himmelfahrt Fundgrube* is a modern research and teaching place for the *Technical University Bergakademie Freiberg* and also a visitors' mine where tourists can visit underground structures of the 14th to the 19th centuries.

The *Rothschönberger Stolln* (Rothschönberg drainage gallery) is regarded worldwide as the final point of the technological development of trans-regional water-adits. Constructed from 1844, it is the most important and deepest lying adit system of the Freiberg mining district still in operation today. Eleven *Lichtlöcher* (shafts) were deepened to advance the gallery. Located on a large heap, the *Lichtloch VII* is a well-preserved example of these shafts including the hoisting house with adjacent wheelhouse, the mine forge and the powder house. Today, a local mining club carefully maintains the site and presents it to the public.

The project will consist of two parts – a practical **working part** and a **study part**.

The practical working part, which will take place at different parts of the site, will last six hours per day. In the evenings and during the weekend there will be time for the educational and cultural activities.



The participants of the Europe Heritage Volunteers Project will work as well at *Reiche Zeche* as at *Lichtloch VII*.

At *Reiche Zeche* they will **uncover a water-column machine** from the 18th century currently covered behind a dry stone wall which has to be taken away for safety reasons. Aim of the works is to document and preserve the water-column machine for educational purposes. Therefore the participants will clean the area and excavate the water-column machine, transport the waste material to the surface and sort the excavated stones to re-use them at *Lichtloch VII*.

Furthermore, some of the participants will work in another part of *Reiche Zeche* in order to prepare the construction of an access to the neighbouring former mine *Geharnischt Männer*. The mine workings are not accessible at the moment, the ladders are in bad condition. Last visits in 1998 showed that the place will provide a lot of archaeological findings from historic mining periods, at least from the 16th century onwards. Aim of the works is to **open up the mine** again as an archaeological training field for students. Therefore it is necessary to **transport material** to enable the re-opening to this area, in particular to transport ladders through the narrow adits below the surface to the shaft and to transport waste material stored in the adits on the way back.

At *Lichtloch VII* the participants will **restore the capping of the wheel chamber** with gneiss stones. The capping of the wall remains have suffered from weathering and several stones are missing. In some cases the arches of the openings are not preserved. During the last years, the responsible local *Mining Club VII. Lichtloch* has collected numerous rubbles (*Freiberger Gneiss*) which can now be used to restore the walls. Additionally, the stones which will be saved from the works at *Reiche Zeche* will be re-used. The stones will be embedded in mortar and the recessing joints will be filled in using small stones.

The participants will **sort and square the rubbles stones** for the walls, prepare the surrounding area, **reconstruct the arches**, complement missing parts, supplement the walls of the wheel chamber up to twenty centimetres and grout the capstones for the brick wall's top edge.

Maintenance of the Cultural Landscape Middle Rhine Valley

Pflege der Kulturlandschaft Mittelrheintal

**ACCOMMODATION:**

shared rooms with beds,
warm showers and toilets

LOCATION:

Next towns: **Rhens** (6 km), **Koblenz** (15 km)

Region: **Rhineland-Palatinate**

TERMINAL:

Next railway station: **Rhens** (6 km)

Next airports: **Frankfurt-Hahn** (HHN, 60 km)

Köln/Bonn (CGN, 102 km)

Frankfurt/Main (FRA, 117 km)

AGE:

at least 18

WHAT TO BRING:

stabile work boots, sleeping bag,
appropriate and waterproof clothes

**Motivation letter related to the project
and CV + photo required**

The 65km-stretch of the **Middle Rhine Valley**, with its castles, historic towns and vineyards, graphically illustrates the long history of human involvement with a dramatic and varied natural landscape. It is intimately associated with history and legends and for centuries has exercised a powerful influence on writers, artists and composers.

As a transport route, the Rhine has served as a link between the southern and northern halves of the continent since prehistoric times, enabling trade and cultural exchange, which in turn led to the establishment of settlements. Condensed into a very small area, these subsequently joined up to form chains of villages and small towns. For over 1,000 years the steep valley sides have been terraced for vineyards.

The landscape is punctuated by some 40 hill top castles and fortresses erected over a period of around 1,000 years. Abandonment and later the wars of the 17th century left most as picturesque ruins. The later 18th century saw the growth of sensibility towards the beauties of nature, and the often dramatic physical scenery of the Middle Rhine Valley, coupled with the many ruined castles on prominent hilltops, made it appeal strongly to the Romantic movement which in turn influenced the form of much 19th century restoration and reconstruction.

The project will consist of two parts – a practical **working part** and a **study part**.

The practical working part, which will take place at different parts of the site, will last six hours per day. In the evenings and during the weekend there will be time for the educational and cultural activities.



The project will **focus on the diversity of the cultural landscape** Upper Middle Rhine Valley and illustrate - both during the hands-on part and the educational part - different aspects of the maintenance of the World Heritage site.

The conservation of the area is partly in a bad state because of the fact that a lot of the former vineyards are out of use, that the maintenance both of the dry stone walls and the biotopes is physically demanding and that the knowledge about traditional techniques is disappearing. Under the guidance of experienced masons the volunteers will **restore parts of the historical dry stone wall system** between the former vineyards.

Another important task will be the **maintenance of biotopes** by cutting long-grass meadows at slopes and in abandoned vineyards with brush cutters. Beside that the traditional way to cut grasses with scythes will be demonstrated.

Furthermore, the participants will **top trees** and cultivate the tree pits at some of the countless meadows with scattered fruit trees which are typical for the region.

Finally, during one day the volunteers will carry out maintenance works in a **historical landscape garden**.

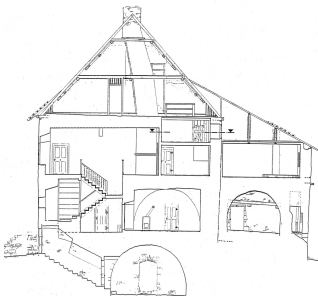
During all these hands-on works the volunteers will have the possibility to get to know well different places of the Upper Middle Rhine Valley, to gain practical skills and to learn about biodiversity and the endangered fauna and flora.

The **study part** will give the theoretical background and will also bring the project and the UNESCO World Heritage Volunteers programme in general into a wider public. It will include meetings with the press and a presentation held by the participants about World Heritage sites of their home countries.

Building Weeks

Lohra Castle

Burg Lohra



In June, July and August Open Houses organises Building Weeks and Workcamps in the same period at Lohra Castle.

The two working groups are living together and they are one community. The only difference between the two projects is the different topics they are working on.

During the camp it will be possible, that volunteers join the other working group, because of their skills or their own interests. Therefore please also see the Lohra Castle Workcamps descriptions.

Lohra Castle is situated in the heart of Germany in Northern Thuringia. The castle, which is surrounded by a scenic hilly landscape, is located on the edge of a nature reserve area. Being one of the largest castles in Thuringia, the history of the castle Lohra begins in the Middle Age. The castle is more than 1,000 years old. Today, it includes twenty buildings from different times: medieval fortifications, remnants of a tower from the 11th century, a Romanesque chapel, a manor house from the Renaissance period as well as stables and granaries from the 19th and the early 20th centuries.

The ensemble is situated in the centre of a beautiful forest. For years Lohra Castle was vacant. In the 1990s Open Houses started to restore the castle and to revive it by cultural activities. Since that time, a large number of Workcamps, Building Weeks, exhibitions, concerts and other activities with international participants took place in the castle.

CONS	OH-B01	06.06. - 17.06.2017
CONS	OH-B02	18.06. - 01.07.2017
CONS	OH-B04	16.07. - 29.07.2017
CONS	OH-B05	30.07. - 12.08.2017
CONS	OH-B06	13.08. - 26.08.2017

ACCOMMODATION:

shared rooms with 2 - 5 beds in 3 guest houses, warm shower (limited hot water), toilets, camp kitchen, wood-burning stoves

LOCATION:

Next towns: **Bleicherode** (6 km), **Nordhausen** (20 km), **Erfurt** (75 km)
Region: **Thuringia**

TERMINAL:

Next bus station:
Großlohra, Friedrichslohra/Wartehalle
Next railway station: **Gebra/Hainleite** (5 km)
Next airports: **Leipzig/Halle** (LEJ, 155 km)
Frankfurt/Main (FRA, 280 km)
Berlin (TXL, SXF, 300 km)

AGE:

at least 18

WHAT TO BRING:

waterproof and strong work boots,
rain jacket, appropriate clothes, sleeping bag
**Motivation letter related to the project
and CV + photo required**

Project Descriptions

B01, B02 Carpentry - Repairing the roof construction of a medieval building

The ensemble of Lohra Castle includes a medieval building from the 12th century located between the castle gate and the Romanesque chapel. The roof construction of this building was erected in the early 20th century, but unfortunately it was underdesigned so that several beams got broken in the meantime.

Under the professional guidance of two carpenters the participants will take off the roof construction, strengthen the construction and replace it. Afterwards they will roof it with historical tiles.

In case there will be time left at the end of the Building Weeks B02 the participants will repair the eaves and the roofing of two impressive barns erected in the 19th century.

Please note that it is absolutely needed that the volunteers of the Building Weeks B01 and B02 are trained to work at height.

B04 Joinery – Planking a gable of a medieval building

Under the professional guidance of an experienced joiner the volunteers will work at the gable of the roof construction which will be erected during the Building Weeks B01 and B02.

They will construct a supporting construction and face the gable with wooden planks in a traditional way to protect the roof construction and the underlying walls against rain. Beside that they will build a wooden fence along the castle moat. Finally, the participants will finish the work which had been started during the Building Weeks in the last year – they will repair and paint wooden windows of a youth accommodation house which is part of the castle complex, too.

B05 Joinery – Planking the floor of a historical granary

Two historical granaries are part of Lohra Castle which had been restored in the past and are nowadays used for various activities. These granaries are both accessible from a common vestibule with historical flooring. Because of their age the planks are partly damaged and have to be renewed.

Under the professional guidance of a joiner the volunteers will remove the old flooring and board the floor while using those original deal boards which are reusable and complementing them with new ones.

B06 Masonry – Restoration of historical walls

Lohra Castle complex is completely surrounded by historical walls which are partly in a bad condition because of the lack of maintenance during the past centuries.

Every year participants of the Building Weeks repair these walls step by step while using traditional techniques. Under professional guidance the volunteers will document the parts of the walls which are damaged, take them away stone by stone and afterwards reconstruct the walls.

Gantikow Manor

Gutshaus Gantikow

**ACCOMMODATION:**

shared rooms with beds, warm shower, toilets

LOCATION:Next towns: **Kyritz** (5 km), **Neuruppin** (40 km)Region: **Brandenburg****TERMINAL:**Next railway station: **Kyritz** (5 km)Next airports: **Berlin** (TXL, SXF, 100 km),**Rostock** (HRO, 150 km)**AGE:**

at least 18

WHAT TO BRING:

stable work boots,

sleeping bag, waterproof clothes

**Motivation letter related to the project
and CV + photo required**

Gantikow Manor is situated 100 kilometres north of Berlin. The house is surrounded by a nice village with a medieval church and a lake. The manor is a picturing example of a former baroque building, changed in the late 19th century in neo-baroque style.

Over centuries, the houses belonged to the Earls von Platen, which sold it in 1872 to a civil family which started soon, in 1877, with the modernisation of the house and kept it in their ownership till 1945. After World War II, the house was first used as a refugee shelter and after that the community used the house as a village centre, hosting the community office, the local store, the school, the kindergarten, the doctor's room, the kitchen of the agricultural cooperative and several apartments. With its many rooms the large building is perfect to be used as a Youth Accommodation House.

The house is surrounded by a beautiful garden with old trees which reached originally up to the lake.

Project Description**Carpentry - Restoration of the roof construction of the oldest part of the manor**

There is still existing one part of the manor which walls remain from the previous baroque building. The current roof construction and the roofing are dating back only to the early 20th century, but unfortunately the construction was underdesigned so that it got broken in the meantime.

Under the professional guidance of a carpenter the participants will remove the roofing and the roof construction, construct a new roof construction and reroof it.

Because it will be sometimes not possible that the whole group will work on the roof at the same time the other volunteers will carry out in these times works on the ground and in the garden as well as small renovation works in the manor.

Please note: it is absolutely needed that the volunteers are trained to work at height.

Rathewalde
Youth Accommodation House
Herberge Rathewalde

ACCOMMODATION:

shared rooms with 4 - 6 beds,
limited warm shower and toilets

LOCATION:

Next towns: **Pirna** (15 km), **Dresden** (25 km)

Region: **Saxony**

TERMINAL:

Next bus station: **Rathewalde**

Next railway station: **Pirna** (15 km)

Next airport: **Dresden** (DRS, 30 km)

AGE:

at least 18

WHAT TO BRING:

stable work boots, sleeping bag

**Motivation letter related to the project
and CV + photo required**



Rathewalde Youth Accommodation House is situated at the traditional health resort Rathewalde in Saxony. The building is located at the end of the village, directly at the border of the National Park *Sächsische Schweiz* (Saxon Switzerland). The mountains are famous for their typical formations of sandstone with lots of small caves and overwhelming views from the tops of the mountains. The National Park offers various possibilities of hiking and climbing tours of different levels.

The house was originally built around 1880, in the following decades it had been extended step by step. When Open Houses overtook the responsibility for the house it was partly in a really bad condition; during the past years countless volunteers restored and renovated the building. The house is surrounded by a beautiful garden with old rhododendrons. From the garden there is a fascinating view into the neighbouring valley and on rock formations.

Project Description

Carpentry - Restoration of the roof of the Youth Accommodation House

The roofing of Rathewalde Youth Accommodation Houses is by now fifty years old and has to be renewed. Under the professional guidance of a carpenter the participants of the Building Weeks will remove the old roofing, repair the roof construction and afterwards reroof the house. Although the roofing - bituminous sheeting – is not a traditional one the works will be very interesting because the combination of the different roof constructions of the different parts of the house dating back to different times will generate the need to find intelligent detail solutions.

Because it will be sometimes not possible that the whole group will work on the roof at the same time the other volunteers will in these times carry out small renovation works at the house and on the ground. They will renew fences as well as painting windows of the Youth Accommodation House.

Ollendorf Water Castle

Wasserburg Ollendorf



ACCOMMODATION:

simple conditions, shared rooms
with beds, warm showers and toilets

LOCATION:

Next towns: **Erfurt** (12 km), **Weimar** (12 km)

Region: **Thuringia**

TERMINAL:

Next bus station: **Ollendorf**

Next railway station: **Erfurt** (12 km)

Next airports: **Halle/Leipzig** (LEJ, 120 km)

Berlin (TXL, SXF, 275 km)

AGE:

at least 18

WHAT TO BRING:

stable work boots,

sleeping bag, waterproof clothes

**Motivation letter related to the project
and CV + photo required**

Ollendorf is situated between Erfurt, capital of Thuringia, and Weimar, the European Capital of Culture 1999. The small village is surrounded by a beautiful countryside.

Ollendorf Water Castle was probably built in the 13th century as a protective fort at the “via regia”. The “via regia” was the most important medieval trading route which ran from Flanders via Frankfurt and Leipzig to Russia. In 1692 the castle had been destroyed by a fire and only the foundations could remain. The current manor house was built in 1694 in a simple rural baroque style, replacing the former castle. Following the decline of the “via regia” in the 19th century, the site was later used for agricultural purposes, and store houses and barns were built. During the last decades, due to long vacancy, the manor fell into disrepair. Since several years Open Houses is active at the Water Castle and could save it from falling apart. Many works has been done since than, both focusing on the restoration of the historical complex and the renaturation of the castle’s surroundings. Due to the young people from different countries, who have lived there and have taken part in its restoration during the last years, the castle changed into a place of creativity and open-mindedness. Ollendorf is a good place to start excursions to important historical and cultural places like Weimar and Erfurt which are not far from the village.

Project Description

B11 Carpentry - Construction of a wooden bridge

The historical stone bridge crossing the castle moat has to be restored in the future. Under the professional guidance of a carpenter the participants will build a wooden replacement bridge to enable the later reconstruction of the historical stone bridge.

In July Open Houses organises Workcamp and Building Weeks in the same period at Ollendorf Water Castle.

The two working groups are living together and they are one community. The only difference between the two projects is the different topics they are working on.

During the camp it will be possible, that volunteers join the other working group, because of their skills or their own interests. Therefore please have a look both at the Workcamp and Buildings Weeks descriptions.

ACCOMMODATION:

simple conditions, shared rooms with beds, warm showers and toilets

LOCATION:

Next towns: **Erfurt** (12 km), **Weimar** (12 km)

Region: **Thuringia**

TERMINAL:

Next bus station: **Ollendorf**

Next railway station: **Erfurt** (12 km)

Next airports: **Halle/Leipzig** (LEJ, 120 km)

Berlin (TXL, SXF, 275 km)

AGE:

at least 18

WHAT TO BRING:

stable work boots,
sleeping bag, waterproof clothes

Ollendorf is situated between Erfurt, capital of Thuringia, and Weimar, the European Capital of Culture 1999. The small village is surrounded by a beautiful countryside.

Ollendorf Water Castle was probably built in the 13th century as a protective fort at the “via regia”. The “via regia” was the most important medieval trading route which ran from Flanders via Frankfurt and Leipzig to Russia.

Please, find more information about the site at the Workcamp description on page 18.

Project Descriptions

W11

The historical stone bridge crossing the castle moat has to be restored in the future. The therefore necessary replacement bridge will cross the moat on another place than the original bridge did. That's why the volunteers will **construct new paths and stairs** so that it will be possible to reach the replacement bridge.

Additionally, the participants will clear up different parts of the ensemble and **take care of the green area** around by cutting grass, mowing lawn and digging up the garden.

W12

The participants of this Workcamp will **construct a wooden gate** and will build new fences surrounding the ground. They will **dig holes for the foundations** of the gate as well as for the fences, cast the foundations and construct the gate and the fences.

Furthermore the participants will continue with the **cultivation of the outdoor area** around the castle.

The participants of both Workcamps should be aware of physically demanding works.

Workcamps

Lohra Castle

Burg Lohra



In June, July and August Open Houses organises Workcamps and Building Weeks in the same period at Lohra Castle.

The two working groups are living together and they are one community. The only difference between the two projects is the topics they are working on. During the camp it will be possible, that volunteers join the other working group, because of their skills or their own interests. Therefore please also see the Lohra Castle Building Weeks descriptions.

Be informed, that during all projects the work will take place also on rainy and cold days and be prepared for that.

Lohra Castle is situated in the heart of Germany in Northern Thuringia. The castle, which is surrounded by a scenic hilly landscape, is located on the edge of a nature reserve area. Being one of the largest castles in Thuringia, the history of the castle Lohra begins in the Middle Age. The castle is more than 1,000 years old. Today, it includes twenty buildings from different times: medieval fortifications, remnants of a tower from the 11th century, a Romanesque chapel, a manor house from the Renaissance period as well as stables and granaries from the 19th and the early 20th centuries.

The ensemble is situated in the centre of a beautiful forest. For years Lohra Castle was vacant. In the 1990s Open Houses started to restore the castle and to revive it by cultural activities. Since that time, a large number of Workcamps, Building Weeks, exhibitions, concerts and other activities with international participants took place in the castle.

ENVI/RENO	OH-W01	06.06. - 17.06.2017
ENVI/RENO	OH-W02	18.06. - 01.07.2017
CONS/ENVI	OH-W03	02.07. - 15.07.2017
ENVI	OH-W04	16.07. - 29.07.2017
ENVI	OH-W05	30.07. - 12.08.2017
ENVI	OH-W06	13.08. - 26.08.2017
ENVI	OH-W07	27.08. - 09.09.2017
ENVI	OH-W08	10.09. - 23.09.2017
ENVI	OH-W09	24.09. - 06.10.2017

ACCOMMODATION:

shared rooms with 2 - 5 beds in 3 guest houses,
warm shower (limited hot water),
1 camp kitchen (cold water), coal-burning stoves

LOCATION:

Next towns: **Bleicherode** (6 km),
Nordhausen (20 km), **Erfurt** (75 km)
Region: **Thuringia**

TERMINAL:

Next bus station:
Großlohra, Friedrichslohra/Wartehalle
Next railway stations: **Gebra/Hainleite** (5 km),
Wolkramshausen (12 km)
Next airports: **Leipzig/Halle** (LEJ, 155 km)
Frankfurt/Main (FRA, 280 km)
Berlin (TXL, SXF, 300 km)

AGE:

at least 18

WHAT TO BRING:

stable work boots, sleeping bag,
waterproof and appropriate clothes

Project Descriptions

The projects of Open Houses are based on sustainable principles. So also the activities at Lohra Castle combine aspects of cultural heritage preservation and aspects of natural heritage preservation.

On one hand the volunteers participating at the Building Weeks repair and restore the historical buildings of the castle complex, on the other hand the participants of the Workcamps carry out works **in the green areas and the forests** around the castle.

W01, W02

Lohra Castle is located on the edge of a nature reserve area and surrounded both by beech forests and fruit trees. The site has a stupendous size of ten hectare, most of them green areas for which the volunteers will take care – by **cutting and collecting the grass** at the meadows and **pulling up weeds**. Additionally, they will support the work of the Building Weeks which will take place in the same period by transporting beams, tiles and other material.

W03, W04

Nearby the youth accommodation houses which are part of Lohra Castle complex there is a camping site which can be used by guest groups, too. For the protection of this area the volunteers will **build new fences** around the campsite. Beside that they will take care of the nearby natural protected area, a huge meadow with old scattered fruit trees. This area was for a long time out of maintenance, therefore there are many big stones and branches covered under the grass. The participants will **collect these stones and branches** to enable to **mow the grass** and afterwards **level the ground**. Furthermore, the volunteers will **close ditches** which had been caused when water pipes had been laid in the last years in the whole castle complex and will **level the ground** there.

W05, W06, W07

The hilly massive near Lohra Castle is listed as National Nature Reservation and Open Houses supports the Nature Reservation since several years with volunteering activities. In a forest around three kilometres from the castle the participants will **remove trees and bushes** which are not corresponding with the protection aims and will collect the wood remaining after maintenance works, **load it on a truck**, unload it at the castle and **split and stack** it for wintertime. Beside that, the volunteers will **continue the maintenance of the green areas** around the castle.

W08, W09

Because around the outer walls of the castle trees had been grown up during the last two decades, actually the castle is partly not seen from the valley. So, besides taking **care of green areas** the volunteers will help to **cut the trees around the walls** in order to expose the view to the castle and will transport the wood to the storage place as well as splitting and stacking the wood.

Klein Dammerow Manor

Gutshaus Klein Dammerow

**ACCOMMODATION:**

common sleeping room with mattresses,
warm shower and toilets

LOCATION:

Next town: **Plau am See** (17 km)

Region: **Mecklenburg-West Pomerania**

TERMINAL:

Next bus station:

Klein Dammerow bei Retzow

Next railway station: **Parchim** (20 km)

Next airports: **Berlin** (TXL, SXF, 160 km),
Rostock (HRO, 120 km)

AGE:

at least 18

WHAT TO BRING:

strong shoes, sleeping bag,
waterproof clothes

Klein Dammerow Manor is located between Berlin and the Baltic Sea and surrounded by nature reserves with many fields, woods, ponds and rivers. The Manor is a very interesting brick building from 1892/93 with a beautiful interior. The walls are covered with clay and painted with lime casein paint. The historical wooden floor planks are revealed and renovated. Most of the rooms are equipped with historical furniture, what gives the house a magnificent attraction.

In the huge garden surrounding the manor house a stone-oven invites to experience conventional bakery, and the fireplace assures nice evenings in the nature, too. The sports area with a football-ground and volleyball-net is just beside. The participants can also enjoy their leisure time discovering the Mecklenburg Lake District. This place is ideal for having a great summer.

Project Description

The work in **Klein Dammerow** will mostly consist of **gardening** and **cleaning up the historical park** around the house, which has been unused for a long time. Year by year, Open Houses brings back to life another part of the huge garden area. The participants will **mow the lawn, cut bushes and trees and reconstruct paths**.

Beside that the volunteers will carry out **small handcraft works** as repair a storage house for fire wood, paint fences and similar tasks.

The participants should be aware of the fact that the works will take place outdoor, also in case of bad weather.

ACCOMMODATION:

shared rooms with 4 - 6 beds,
limited warm shower and toilet

LOCATION:

Next towns: **Pirna** (15 km), **Dresden** (25 km)

Region: **Saxony**

TERMINAL:

Next bus station: **Rathewalde**

Next railway station: **Pirna** (15 km)

Next airports: **Dresden** (DRS, 30 km)

Leipzig/Halle (LEJ, 160 km)

Berlin (TXL, SXF, 240 km)

AGE:

at least 18

WHAT TO BRING:

stable work boots, sleeping bag,
waterproof clothes



Rathewalde Youth Accommodation House is situated at the traditional health resort Rathewalde in Saxony. The building is located at the end of the village, directly at the border of the National Park *Sächsische Schweiz* (Saxon Switzerland). The mountains are famous for their typical formations of sandstone with lots of small caves and overwhelming views from the tops of the mountains. The National Park offers various possibilities of hiking and climbing tours of different levels as well as cultural events like theatre performances at the open air theatre "Felsenbühne Rathen" (cliff stage Rathen). The house was originally built around 1880, in the following decades it had been extended step by step. When Open Houses overtook the responsibility for the house it was partly in a really bad condition; during the past years countless volunteers restored and renovated the building. The house is surrounded by a beautiful garden with old rhododendrons. From the garden there is a fascinating view into the neighbouring valley and on rock formations.

Project Description

The participants will carry out **maintenance and gardening works** on the ground like **cultivating the garden, clipping hedges, renewing and painting fences**.

During the project the whole group or a part of it will work at another historical house Open Houses' takes care for – Stadt Wehlen Rectory – which is around ten kilometres away from Rathewalde. The volunteers will **lay water lines** to protect the historical walls of the rectory from rainwater.

Guest Guiding Classical Weimar

Klassisches Weimar

**ACCOMMODATION:**

sleeping room with bed, simple equipped kitchen and bathroom will be shared

LOCATION:

Weimar

TERMINAL:

Next bus and railway station: **Weimar**

Next airports: **Leipzig / Halle** (LEJ, 155 km)

Berlin (TXL / SXF, 300 km)

AGE:

at least 20

WHAT TO BRING:

German dictionary

LANGUAGE:

very good level of English, basics of German, other languages are welcome

Motivation letter related to the project,

CV + photo and basics of German required

Weimar is a beautiful small city, located in the middle of Germany in the state of Thuringia. It has a huge number of cultural important places, because of the moved history. Especially the Classical Period made the city, what it is now. By the late 18th century many of the leading writers and thinkers in Germany, such as Goethe, Schiller and Herder came to Weimar and shaped the cultural life and in the same time the image of the city. Weimar became the cultural centre of Europe at that time. Even many painters, composers and philosophers lived in the city during the classical period. And still now you find many creative and inspired people living in Weimar, which were attracted by the great accumulation of cultural spirit. Since 1998 the “Classical Weimar” is on the UNESCO World Heritage List. Besides Goethe’s House, the City Church and the City Palace, especially the parks and gardens with their impressive landscape architecture and pretty castles are part of the UNESCO World Heritage Site “Classical Weimar”.

During the 20th century Weimar became the birthplace of the Modern Movement in architecture and aesthetics. The Bauhaus was developed by merging the Grand Ducal School of Arts and Crafts and the Weimar Academy of Fine Arts. It had a profound influence upon developments in art, architecture, design and typography. The “Bauhaus and its Sites in Weimar and Dessau” are listed as UNESCO World Heritage, too.

For all this historical important marks and to spread the knowledge of the past, Weimar became European Capital of Culture in 1999.

Project Description

Since many years UNESCO World Heritage Volunteers Projects are taking place at the parks and gardens of the UNESCO World Heritage Site “Classical Weimar”. The focus of the activities had been all the years at Belvedere Park, where the volunteers based on historical plans uncovered and restored historical paths which had been disappeared for decades.

European Heritage Volunteers, a branch of Open Houses, coordinates the European part of the UNESCO World Heritage Volunteers initiative as well as organises European Heritage Volunteers projects in Germany and initiates and coordinates European Heritage Volunteers Partner Projects all over Europe.

The complex of Belvedere Orangery and the associated buildings had been restored by Weimar Classic Foundation during the last years and was reopened in 2015.

In the former Garden Inspector's House is installed a permanent exhibition prepared by European Heritage Volunteers about European Heritage Volunteers Projects in Europe as well as about UNESCO World Heritage Volunteers Projects worldwide. The exhibition is complemented by videos presenting some of the Heritage Volunteers projects having taken place in Europe during the last years.

The volunteer taking part in the Guest Guiding project will be at the place from Tuesday to Friday in the afternoons and on Saturdays and Sundays the whole days – the time when most of the visitors will come. S/he should be available for the visitors of the exhibition, answering their questions concerning European Heritage Volunteers, UNESCO World Heritage Volunteers in general and the UNESCO World Heritage Volunteers project at Belvedere Park. Own contribution concerning related topics as conservation, heritage management, garden architecture and similar is welcome. The volunteer will work in close cooperation with the Department for Castles, Gardens and Buildings of Weimar Classic Foundation.

Beside that the volunteer will be involved in the current UNESCO World Heritage Volunteers Project in Weimar by providing guided tours for the participants, presenting heritage sites of its country of origin and similar.

The volunteer is accommodated in a shared flat in Weimar. S/he gets 50 € pocket money per month and 5 € for food per day and s/he will have a simple bike to get from the accommodation to the working place (ca. 4 km). For the participant of this project should be clear that s/he is the only volunteer at the place.

Mid Term Volunteering

Camp Leading

Lohra Castle and all other camp places
of Open Houses' 2017 programme

SOCI **OH-C01** 05.06. - 06.10.2017

SOCI **OH-C02** 05.06. - min. 16.07.2017

SOCI **OH-C03** 02.07. - min. 26.08.2017

SOCI **OH-C04** 13.08. - 06.10.2017



DURATION:

Between six weeks and four months,
in exceptional cases less or more

The beginning dates are fixed because of
the introduction course

ACCOMMODATION:

Depending on the camp place. Please have
a look at the camp place descriptions.

AGE:

at least 20

LANGUAGE:

very good level of English, basics of
German, other languages are helpful

WHAT TO BRING:

alarm bell, calculator, purse,
working gloves and strong shoes,
sleeping bag, waterproof clothes

**Motivation letter related to the project,
CV + photo and basics of German required**

Organising and leading an international Workcamp is an interesting challenge for those who enjoy working together with young people from all over the world, which are willing to take over a big responsibility and who look forward to a great summer in Germany. The camp leader's role lies in building a bridge between the participants of the Workcamp, the organisation as well as the technical leaders who guide the practical part of the camp. S/he supports the group of volunteers from a social and intercultural point of view.

Open Houses is looking for people who are highly motivated and responsible, open minded and which already have some experiences in handling with other people. They should be able to speak English fluently and basics of German.

The main tasks are to **organise the social life** for all volunteers during the camp period. The leader will **welcome the volunteers** and make them familiar with the camp site. S/he will **prepare the daily schedule, indicating the working and eating times including breaks** and will furthermore be responsible **for organising the cleaning and cooking teams**, alternating within the group. The camp leader will **buy the food** for the volunteers, having an eye on the everyday changing cooking teams with their individual dishes. Additionally, s/he **organises leisure activities** after the working days and is welcome to prepare campfires, barbecues, games or other group activities. For the weekends the camp leader should be ready to **plan little trips to bigger cities nearby or other activities**. A camp leader has **rarely time for personal things** during the Workcamp. S/he is always the person in charge of everything and contact person in any questions and needs of the volunteers. This should be clear to all applicants.

It is also important that the social leader stays in **close contact to the technical leaders**, who are organising the working groups and know which work has to be done. It is helpful to support the technical leaders by **taking over the responsibility for a working group**, if there are no other works to be done for the social leader. At some camps, especially in environmental camps, it can happen that the functions of social and technical leaders are running more together. So it is good to be prepared also to organise a little bit the working part.

The social leader is also responsible for **managing the deduction and finances** of the camp and to take care of the **documentation** – writing down what has been done, taking pictures and leading the evaluation of the camp. It is important to do this documentation with a certain care, so that the social leader which will lead the following camp will know what happened in the past and doesn't need to look for the same information or to do the same mistake a second time.

Project Description

The social camp leader has to be able to **work independently as well as in a team**. Since most of the camps are organised by several camp leaders (one or two social and one or more technical leaders) it is necessary to agree upon several issues in a team.

All in all, leading a camp means a **lot of work and empathy** as well as a lot of fun. Open Houses gives the camp leaders the opportunity to be **creative** and to take over **responsibility** for their own work. Of course, they will not be left alone in their role.

Before getting active as a camp leader s/he will take part in one camp as a volunteer, parallel will be time for the introduction as camp leader. It will be a good experience to be an “ordinary participant” for one or two weeks and to get to know the camp leader's tasks from the participants' point of view. After experiencing the atmosphere of the first camp and after Open Houses and the potential camp leader have gotten to know each other better, Open Houses will decide if s/he will be able to lead camps or not or if s/he would need an additional introduction time.

During the summer season Open Houses organises a lot of Workcamps in different places in Germany. Depending on the camp leader's interests and abilities Open Houses and the potential camp leader will decide together where s/he will lead camps. In general, Open Houses offers two possibilities: The volunteers can lead **several successive camps in one place** (at Lohra Castle) or can lead **different camps at various places**.

For each real camp leading week the volunteer gets 70 € pocket money. S/he does not have to pay for food and accommodation. The camp leader will receive the pocket money after the camp, when all the camp documents will be checked by the office staff and everything will be fine.

Mid Term Volunteering

Support of Technical Leading of Workcamps

Different camp places of Open Houses

CONS OH-C05 05.06. - 06.10.2017

CONS OH-C06 05.06. - min. 15.07.2017

CONS OH-C07 02.07. - min. 26.08.2017

CONS OH-C08 13.08. - min. 23.09.2017



ACCOMMODATION:

Depending on the camp place.
Please, have a look in the camp place descriptions.

AGE:

at least 20

LANGUAGE:

English, basic knowledge of German and other languages are helpful

WHAT TO BRING:

working gloves and strong working shoes,
sleeping bag, waterproof clothes

**Motivation letter related to the project
and CV + photo required**

Organising and leading an international Workcamp is an interesting challenge for those who enjoy working together with young people from all over the world and which are willing to take over responsibility.

For young and older people more **interested in the technical side** of the works than in the organisation of the social life Open Houses offers the possibility to support the technical leading of Workcamps and Building Weeks in the framework of Mid Term Volunteering. This could be an interesting task for **skilled craftsmen**, for those which have own **manual experiences** or for those which want to **train their organisational skills**.

The leading of the technical side of the Workcamps lies in the hands of one of Open Houses' technical leaders. The volunteer which supports him can overtake a part of the technical leaders' responsibility. Depending on the wishes, the skills and the experience of the volunteer this can be the organisation of the schedule of the working day, the responsibility for tools and material, the **leading of a smaller group of volunteers** or more special tasks.

For students of architecture, building engineering and similar fields this kind of voluntary service **can be recognized as internship for their studies**. Open Houses will offer the necessary certificates.

Because of the big variety of the individual curricula and experiences Open Houses will create for every volunteer an individual plan of the voluntary service, including introduction, supervision and evaluation.

Per every week the volunteer supports the technical leader s/he receives 70 € pocket money. S/he does not have to pay for food and accommodation and can take part in all cultural activities and excursions of the camps.



www.openhouses.de



Goetheplatz 9 B
D – 99423 Weimar

Tel.: **++49 / (0) 3643 / 50 28 97**
(only German speaking)
Fax: **++49 / (0) 3643 / 85 11 17**

Web: **www.openhouses.de**



■ **General Co-operation**

Bert Ludwig

Mobile: **++49 / (0) 172 / 77 46 913**
info@openhouses.de

■ **Incoming
MTV**

Sarah Renner

Mobile: **++ 49 / (0) 176 / 188 08 116**
incoming@openhouses.de

■ **Outgoing**

Sarah Renner

workcamps@openhouses.de